

Dalian Commodity Exchange

IT Connectivity and Market Data

This brochure is prepared by DCE for the sole purpose of providing general information about the futures market in China.

Certain of the information contained in this brochure has been obtained from published sources prepared by other parties. Whilst sources are believed to be reliable, neither DCE nor any other person accepts responsibility for the accuracy or completeness of such information. No representation or warranty, express or implied is given in connection with any information given in this brochure and no responsibility is accepted by DCE, its associates or any of their directors, officers, employees or agents, in respect thereof. The delivery of this brochure does not imply that the information herein is correct.

All statements of opinion and/or belief contained in this brochure and all views expressed and all projections, forecasts or statements relating to expectations regarding future events or the possible future performance of DCE represent its own assessment and interpretation of information available to it as at the date of this document. No representation is made or assurance given that such statements, views, projections or forecasts are correct or that the objectives of DCE will be achieved.

www.dce.com.cn

Address: No.129 Huizhan Road, Dalian 116023, China

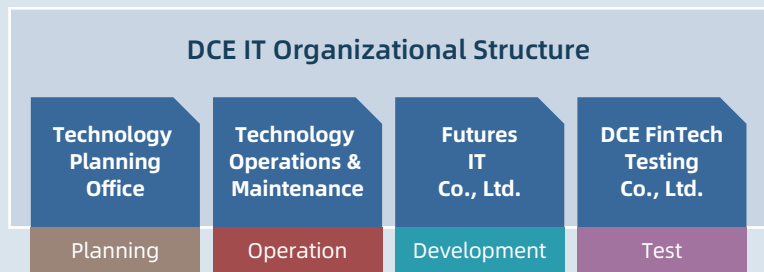
Tel: (86) 411- 8480 8888 Fax: (86) 411- 8480 8588

© Dalian Commodity Exchange. All rights reserved.

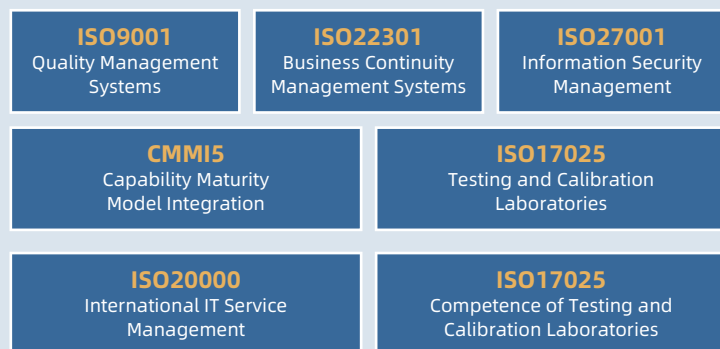
November, 2020



IT System



At present DCE has completed the whole process system construction of quality control, project management, testing system and operation services.

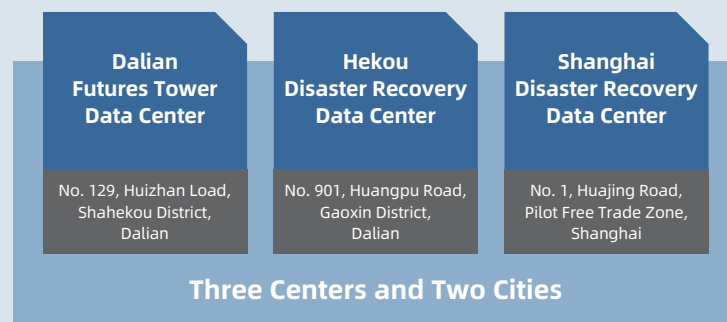


DCE successfully launched its 7th generation electronic trading system DCE-TS in October 2020. The DCE-TS is DCE self-developed system with fully independent intellectual property. The cutting-edge technology delivers low latency, high throughput and robustness. The order processing capacity can reach as high as 95,000 per second and the average RTT (round trip time) can reach as low as 144 microsecond.

Key Capacity Indicators	DCE V7.0	High Extensibility	High Security
Contracts	500,000	Easy Scalability	Easy Operation and Maintenance
Seats	10,000		

Business Continuity Plan

With the layout of “Three Centers and Two Cities”, DCE currently has three data centers, namely, the main center at Dalian Futures Tower, the same-city disaster recovery center at Hekou and the remote disaster recovery center in Shanghai. The same-city disaster recovery center in Dalian and the remote disaster recovery center in Shanghai boast complete trading system equipment. When a disaster or a major disaster occurs, the trading system at the same-city or Shanghai remote disaster recovery center can take over the trading to ensure the continuity of the trading business.



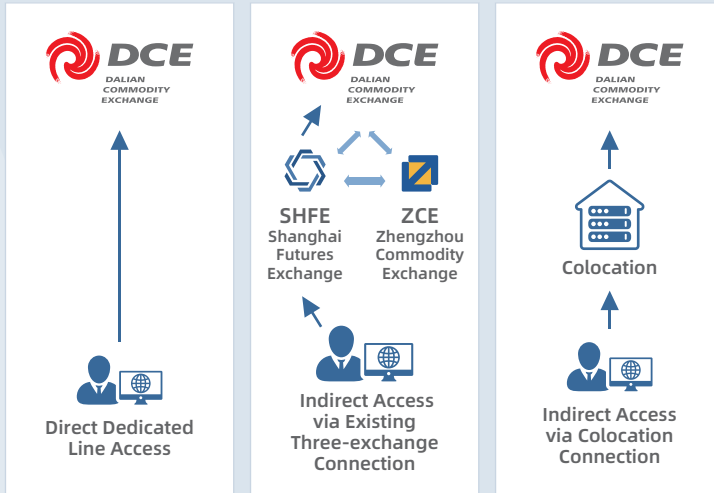
Emergency Drill and Emergency Plan

DCE has formulated an emergency plan in accordance with the requirements of the CSRC, and plans to continue to revise the “Emergency Plan for Information Security Incidents of Dalian Commodity Exchange” on a yearly basis, while making emergency cards and brief manuals for all personnel in rapid response to emergencies.

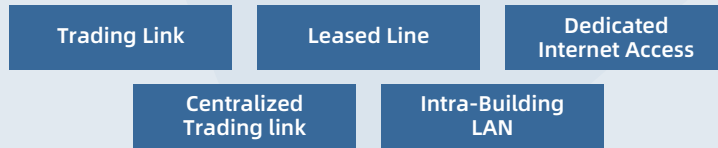
The emergency plan of DCE provides the structure, personnel composition and responsibilities of the emergency organizations. In accordance with the requirements of the CSRC, DCE organizes relevant departments to participate in the annual emergency drills for the securities and futures industry every year, and takes an active part in the setting of the emergency scenes and the improvement of the emergency systems. An internal rehearsal has been organized before the annual emergency drill every year, and a written summary report has been provided after the emergency drill is completed. DCE has organized rectification and acceptance for the discovered problems in time to ensure continuous improvement of the emergency system and process.

Trading Connectivity

Futures and Options trading of the DCE can be classified as remote trading in the majority of cases, including three following ways. "Floor trading" is only used for emergency.



Co-location Link Services



Member Accessing Principle

In the case of dual direct dedicated lines, member should make sure the two lines are connected to **different data centers**.

- ▼ In the case of indirect access, member should choose the **dedicated lines of different SP**.
- ▼ One dedicated line is recommended to carry one seat, and bandwidth is **not less than 10Mbps**.
- ▼ Member as well as colocation data center should be **isolated from IT system of DCE** by deploying security equipment or configuring security policy.
- ▼ Member as well as colocation data center should **conduct line switch drill** every half a year.
- ▼ Except for the test organized by DCE, any type of hardware and software test accessing to DCE are **strictly prohibited**.
- ▼ **Static routing** is required for member access.

Co-location Services

Futures Tower	Hekou	High Tech Park
1. With trading hosting, link leasing and others, we offer the best quality services for members and satisfy the business needs of traders.	2. Offering hosting service for quantitative trades, and disaster backup hosting for Futures Company Members.	3. Referring to T3+ international standard construction. It is a green energy data center with reliability, safety and cost efficiency.

Infrastructure

- **Power**
 - Two-ways city power supply
 - Special transformer for power supply system of engine room
- **UPS System and Cabinet Power Supply**
 - Dual-bus system (2N+1)
 - Two completely independent power lines
 - National standard 10A socket
- **Wiring**
 - Strong and weak electricity wires separation
- **Safety Facilities**
 - 7x24hrs guard
 - 24hrs video monitoring
 - Very early fire warning system
 - Automatic fire alarm system and auto clean gas extinguishing system
- **Electric Generator**
 - Self-built diesel electric generator system
- **Cabinet**
 - 19 inch and 42U standard server cabinet
- **Monitoring System**
 - Monitoring all physical component
- **Cooling System**
 - precision air conditioner

Market Data

Level-2 Market Data

- 4 Snapshots/second
- 5 Level depth order
- First 10 order at best bid & offer
- Statistical data
- Real-time settlement price

Level-1 Market Data

- 2 Snapshots/second
- 1 Level order

Level-2 DataFeed Services

Co-Location Centers

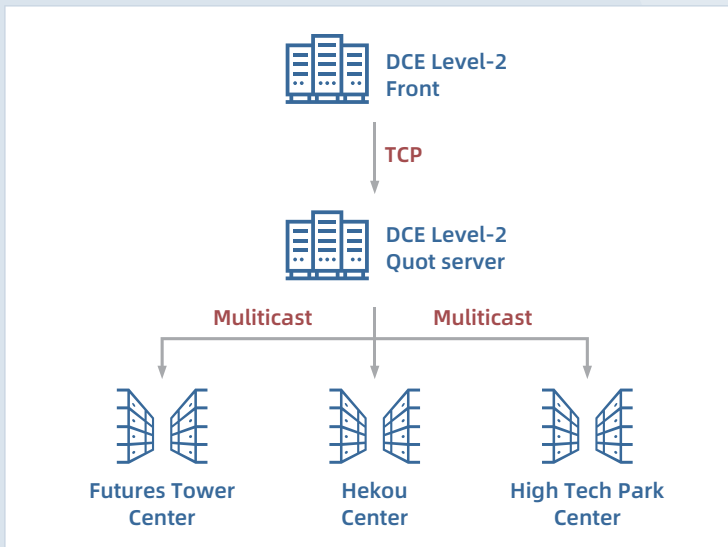


Server Co-location
Host your server in the cabinets rented by Futures Company Members.

Information Vendors



Receiving data from IV
Receiving data from licensed information vendors.



Authorized Vendor List

Level-1 Data Licensed Information Vendors



Level-2 Data Licensed Information Vendors



Delayed Data Licensed Information Vendors

